

CAMBIAR LA CONTRASEÑA

Paso 1


Inicie una sesión en su cuenta de YMMS en NADYouth.com

Paso 2

En el lado abajo y derecha de contraseña, haga clic en olvide contraseña (Forgot password).

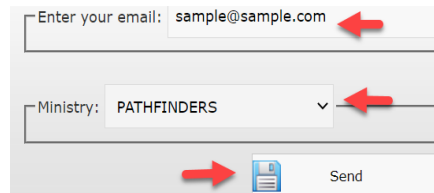
Your password


Type the password


 **Forgot password?**



Paso 3

Escriba su email y seleccione el ministerio al que pertenece. Haga clic en el Icono Enviar.

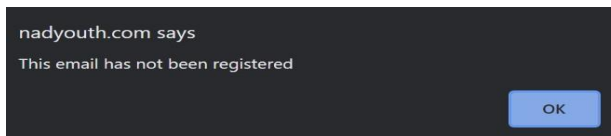


Enter your email: sample@sample.com 

Ministry: PATHFINDERS 

  Send

Si su email o ministerio es incorrecto, recibirá un mensaje.




Recibirá un email con instrucciones.

Paso 4

Es importante que tenga una contraseña fuerte, siga la recomendación de su contraseña.

Strong password tip from YMMS:

- 1 - Password is greater than 8 characters: + 5% of strength
- 2 - Password greater than 12 characters: + 15% of strength
- 3 - Password with at least 01 upper case letter: + 20% strength
- 4 - Password with at least 01 lower case letter: + 20% of strength
- 5 - Password with at least 01 number from 0 to 9: + 20% of strength
- 6 - Password with at least 01 special character: + 20% of strength - (! @ # \$ % & ?)


Minimum acceptable: 80% 

Possible total: 100%

..... 

Suggestion: 6c0=FHfR%_z6 

Password entered: 9f5\$Bk@_3#Ee (Characters: 12)

 Perfect - Degree of strength: 100%